



SURTEX
Maxview
RETRACTOR SYSTEM



SURTEX
INSTRUMENTS

Crafted to Excellence



SURTEX
Maxview
RETRACTOR SYSTEM

Surtex Maxview Retractor System

Our **Maxview** Retractor is an interdisciplinary surgical retractor system:

The system is modular in construction and retaining arms can be positioned according to specified operating field.

Maxview Blade Holder can be fixed to any area of retaining system.

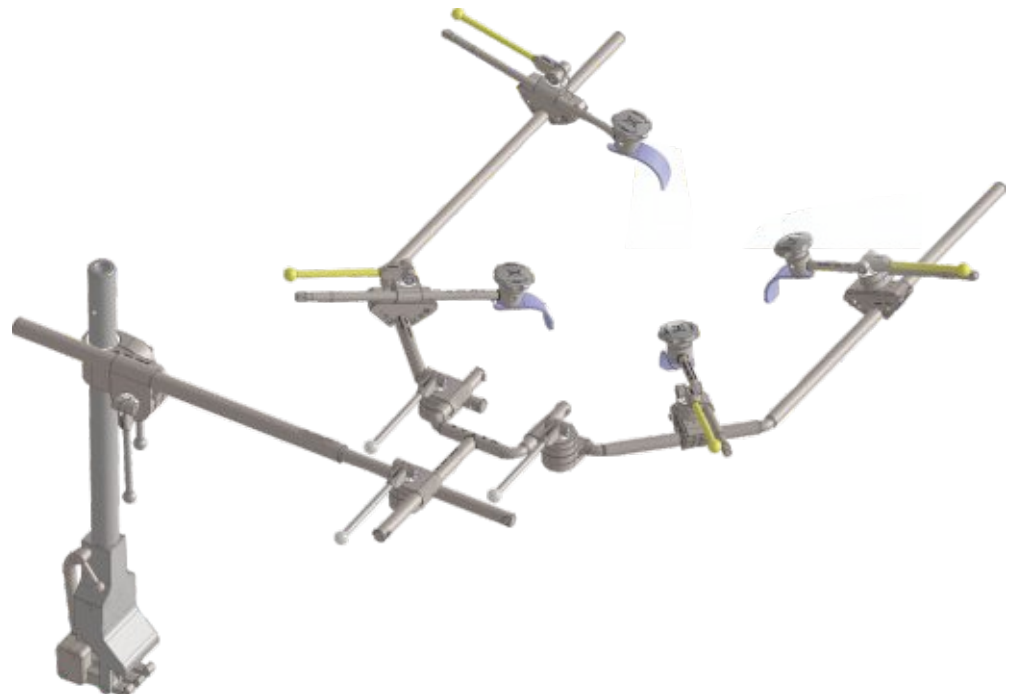
Because of our innovative blade holding locking system, it's possible to change the blade - without dismantling the holder itself - within a few seconds (Press-Turn-Locking/PTL).

Same blade can be user-defined utilized as swivel blade or as fixated blade by turning the rotating wheel.

The self retaining modular construction makes the Surtex **Maxview** Retractor system efficient and optimally cost-effective to use.

Areas of use and access:

- Abdominal
- Thyroid/Carotid
- Axilla
- Upper abdomen/Rochard
- Vaginal
- Perineal
- Spine
- Paediatric Surgery
- Transplant Surgery
- Endoprosthetic





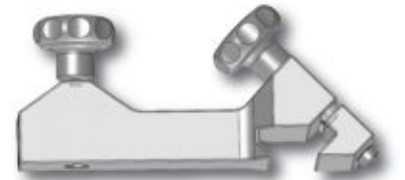
Socket Clamp

Catalog #	Size
RT-1000-01	25 x 10 mm (Euro Rail)
RT-1000-02	28.5 x 9.5 mm (US Rail)



Socket Clamp
Universal

Catalog #	Size
RT-1000-03	Standard



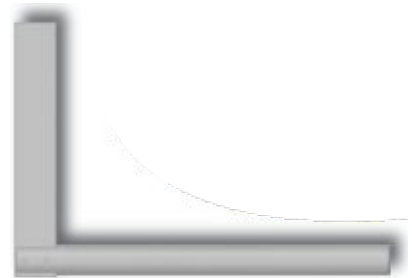
Pillar

Catalog #	Size
RT-1070-35	35 cm, incl. hole Ø 12 mm



Distance Holder

Catalog #	Size
RT-1072-00	22 cm, Ø 18 mm, 25x10 mm



Support Arm

Catalog #	Size, Profile
RT-1076-43	43 cm, Straight
RT-1076-50	50 cm, Straight





Crossbar

Catalog #	Size
RT-1080-22	22 cm



Mini Frame Arm

Catalog #	Size, Profile
RT-1084-30	30 cm, Angled 2 Fold



Ortho Frame Arm

Catalog #	Size, Profile
RT-1084-40	40 cm, Angled 2 Fold



Maxi Frame Arm

Catalog #	Size, Profile
RT-1084-50	50 cm, Angled 2 Fold



Stack

Catalog #	Size
RT-1086-15	15 cm
RT-1086-45	45 cm





Extension Arm

Catalog #	Size, Profile
RT-1088-35	Ø 12 mm, 2X, 35 cm
RT-1088-48	Ø 12 mm, 2X, 48 cm



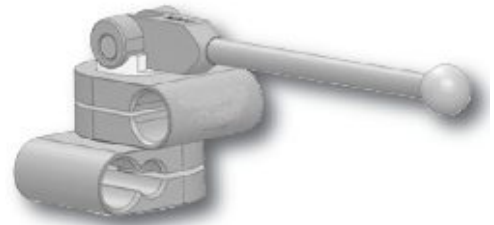
P-Clamp

Catalog #	Size, Profile
RT-1090-00	Two Diameter (Ø 16 + 12 mm)



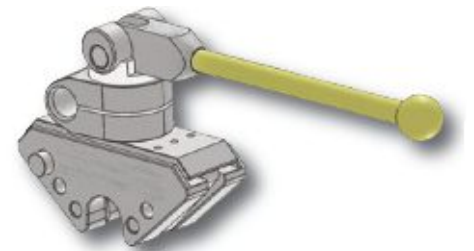
S-Clamp

Catalog #	Size, Profile
RT-1094-00	Two Diameter (Ø 12 + 8 mm)



Q-Clamp

Catalog #	Profile
RT-1098-00	With Lock



Blade Holder

Catalog #	Size, Profile
RT-1106-20	20 cm, Press-Turn-Locking





Blade Holder Swivel
With Toothed Bar



Catalog #	Size
RT-1112-21	21 cm

Adaptor For Blade Holder
With Toothed Bar



Catalog #	Size
RT-1100-00	Standard

Rochard Traction Device



Catalog #	Size
RT-1102-22	22 cm

Holder W. Ball and Socket Joint



Catalog #	Size
RT-1114-23	23 cm Ø 8 mm



Extension Arm

Catalog #	Size, Profile
RT-1088-48	Ø 12 mm, 2 x 48 cm



Holder W.Hexagonal Snap Closing

Catalog #	Size
RT-1110-20	20 cm



Holder With Ball & Socket Joint

Catalog #	Size
RT-1120-00	Standard



Fixing Adapter W. Ball
F.Hohmann-Retractor

Catalog #	Size
RT-1122-00	Standard



Fixing Adapter For Ball
F.Hohmann-Retractor

Catalog #	Size
RT-1124-00	Standard



INCHES
MILLIMETERS



Ortho Frame Arm
Angled

Catalog #	Size, Profile
RT-1084-40	40 cm, 2 Fold



Holder W.Hexagonal

Catalog #	Size, Profile
RT-1110-20	20 cm, Snap Closing



Fixing Adapter For Ball/Hohmann Retractor

Catalog #	Size
RT-1124-00	Standard



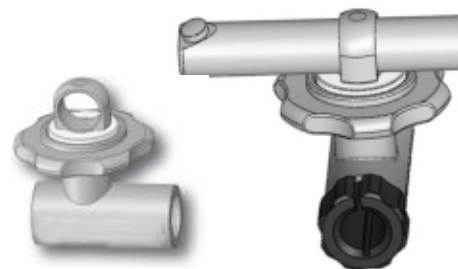
Handle For Blade Holder

Catalog #	Size
RT-1108-00	Standard



Optoclip
Endoscope Holder

Catalog #	Size
RT-1002-00	Standard





Bushing For Endoscopes

Catalog #	Size
RT-1002-04	Ø 4 mm
RT-1002-05	Ø 5 mm
RT-1002-08	Ø 8 mm
RT-1002-10	Ø 10 mm
RT-1002-12	Ø 12 mm



Kirshner Body Wall Retractor Blade

Catalog #	Size
RT-1010-40	55 mm x 40 mm
RT-1010-50	65 mm x 50 mm
RT-1010-60	85 mm x 60 mm
RT-1010-78	65 mm x 78 mm
RT-1010-80	90 mm x 80 mm





Langenbeck Retractor Blade

Catalog #	Size
RT-1020-30	11 mm x 30 mm
RT-1020-35	11 mm x 35 mm
RT-1020-40	11 mm x 40 mm
RT-1020-45	11 mm x 45 mm
RT-1020-50	11 mm x 50 mm
RT-1020-55	11 mm x 55 mm
RT-1020-60	11 mm x 60 mm
RT1020-65	11 mm x 65 mm
RT-1022-04	20 mm x 40 mm
RT-1022-06	20 mm x 60 mm
RT-1022-08	20 mm x 80 mm
RT-1022-10	20 mm x 100 mm
RT-1022-12	20 mm x 120 mm
RT-1022-14	20 mm x 140 mm
RT-1022-16	20 mm x 160 mm
RT-1024-09	40 mm x 90 mm
RT-1024-10	40 mm x 100 mm
RT-1024-12	40 mm x 125 mm
RT-1024-15	40 mm x 150 mm
RT-1026-11	50 mm x 115 mm
RT-1026-15	50 mm x 150 mm
RT-1026-20	50 mm x 200 mm



Langenbeck Retractor Blade

Catalog #	Size
RT-1022-04 T	20 mm x 40 mm
RT-1022-06 T	20 mm x 60 mm
RT-1022-08 T	20 mm x 80 mm
RT-1022-10 T	20 mm x 100 mm
RT-1022-12 T	20 mm x 120 mm
RT-1022-14 T	20 mm x 140 mm
RT-1022-16 T	20 mm x 160 mm





Mini-Langenbeck Retractor Blade

Catalog #	Size
RT-1014-25	6 mm x 25 mm



**Retractor Blade,
Malleable**

Catalog #	Size
RT-1030-50	50 cm x 160 mm
RT-1030-75	75 cm x 160 mm



Deaver Retractor Blade

Catalog #	Size
RT-1036-07	25 mm x 75 mm
RT-1036-09	25 mm x 90 mm
RT-1036-10	25 mm x 105 mm
RT-1036-12	25 mm x 120 mm
RT-1036-15	25 mm x 150 mm
RT-1036-20	25 mm x 200 mm
RT-1038-12	50 mm x 125 mm
RT-1038-15	50 mm x 150 mm
RT-1040-11	70 mm x 115 mm
RT-1040-20	70 mm x 200 mm
RT-1042-10	75 mm x 100 mm



**Slotted Retractor Blade
Malleable**

Catalog #	Size
RT-1044-12	50 mm x 125 mm
RT-1044-16	50 mm x 165 mm
RT-1046-12	80 mm x 125 mm
RT-1046-16	80 mm x 165 mm

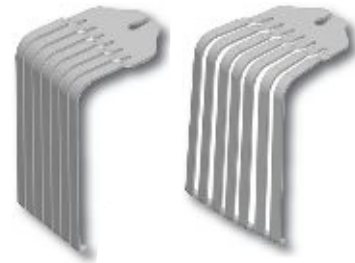


INCHES
MILLIMETERS



Finger Hook
Adjustable Blade

Catalog #	Size
RT-1048-12	90 mm x 125 mm
RT-1048-14	90 mm x 140 mm
RT-1048-16	90 mm x 165 mm



Doyen Retractor Blade

Catalog #	Size
RT-1050-09	60 mm x 92 mm
RT-1050-12	60 mm x 122 mm
RT-1050-16	60 mm x 160 mm



Harrington-Mini Retractor
Malleable

Catalog #	Size
RT-1052-50	25 mm x 50 mm
RT-1052-70	25 mm x 70 mm



Harrington Retractor
Malleable

Catalog #	Size
RT-1054-12	45 mm x 125 mm
RT-1054-17	45 mm x 175 mm
RT-1056-12	65 mm x 125 mm
RT-1056-17	65 mm x 175 mm





Breisky Specula

Catalog #	Size
RT-1060-09	25 mm x 90 mm
RT-1060-11	25 mm x 110 mm
RT-1060-13	25 mm x 130 mm
RT-1060-15	25 mm x 150 mm
RT-1060-20	25 mm x 200 mm
RT-1060-25	25 mm x 250 mm
RT-1062-09	35 mm x 90 mm
RT-1062-11	35 mm x 110 mm
RT-1062-13	35 mm x 130 mm
RT-1062-15	35 mm x 150 mm
RT-1062-20	35 mm x 200 mm



Fence

Catalog #	Size
RT-1064-12	100 mm x 120 mm
RT-1064-15	100 mm x 150 mm
RT-1064-20	100 mm x 200 mm
RT-1064-25	100 mm X 250 mm



Richardson Retractor Blade

Catalog #	Size
RT-1066-18	15 mm x 18 mm
RT-1066-25	21 mm x 25 mm
RT-1066-30	29 mm x 30 mm
RT-1066-37	38 mm x 37 mm





Kelly Retractor Blade

Catalog #	Size
RT-1074-64	52 mm x 64 mm
RT-1074-80	64 mm x 80 mm



Roux Retractor Blade

Catalog #	Size
RT-1078-01	11 mm x 17 mm
RT-1078-02	11 mm x 38 mm
RT-1078-03	16 mm x 17 mm
RT-1078-04	18 mm x 22 mm
RT-1078-05	23 mm x 28 mm



Volkman Retractor Blade

Sharp

Catalog #	Size
RT-1082-02	8 mm x 12 mm, 2 Teeth
RT-1082-03	16 mm x 20 mm, 3 Teeth
RT-1082-04	22 mm x 20 mm, 4 Teeth
RT-1082-06	35 mm x 20 mm, 6 Teeth



Volkman Retractor Blade

Blunt

Catalog #	Size
RT-1083-02	8 mm x 12 mm, 2 Teeth
RT-1083-03	16 mm x 20 mm, 3 Teeth
RT-1083-04	22 mm x 20 mm, 4 Teeth
RT-1083-06	35 mm x 20 mm, 6 Teeth





Israel Retractor Blade
Blunt

Catalog #	Size
RT-1092-05	41 mm x 51 mm, 5 Teeth
RT-1092-06	62 mm x 53 mm, 6 Teeth



Prostate Retractor
Malleable

Catalog #	Size
RT-1096-50	50 mm x 125 mm



Bladder-Retractor Blade
Malleable

Catalog #	Size
RT-1096-60	60 mm x 180 mm
RT-1096-60	80 mm x 150 mm



Bladder-Retractor Blade
Malleable

Catalog #	Size
RT-1104-25	25 mm x 100 mm



St. Marks Pelvis Retractor
(Kidney Vein)

Catalog #	Size
RT-1116-17	60/25 mm x 174 mm





St. Marks Pelvis Retractor Blade

Catalog #	Size
RT-1118-17	60/45 mm x 178 mm



St. Marks Pelvis Retractor Blade

Catalog #	Size
RT-1118-12	60/45 mm x 124 mm
RT-1118-27	60/45 mm x 270 mm



Retractor Blade For Axilla

Catalog #	Size
RT-1126-13	35 mm x 130 mm
RT-1126-17	25 mm x 175 mm



Alan Parks Retractor Blade

Catalog #	Size
RT-1128-75	24 mm x 75 mm
RT-1128-95	24 mm x 95 mm





Heavy Duty Rail Clamp

Catalog #	Size
RT-1150-00	Standard



Holding Arm Single With Hexagonal Quick Coupling

Catalog #	Size
RT-1152-00	Standard



**Swan Neck
Fiber Optic Light Cable**

Catalog #	Size
RT-1160-40	40 cm, Ø 5 mm



Cushing Retractor Blade

Catalog #	Size
RT-1162-08	8 mm x 10 mm
RT-1162-10	10 mm x 11 mm
RT-1162-12	12 mm x 12 mm
RT-1162-14	14 mm x 13 mm
RT-1162-16	16 mm x 14 mm
RT-1162-18	18 mm x 16 mm



**Frame Arm
Angled 45°**

Catalog #	Size
RT-1170-12	12 mm x 10 cm





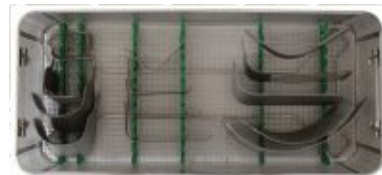
Basket Including Inlay
For Basic Set

Catalog #	Size
RT-1199-01	Standard



Basket Including Inlay
For Blades & Accessories

Catalog #	Size
RT-1199-02	Standard



Blade Holder
Flex Swivel, With Spring

Catalog #	Size
RT-1172-00	Standard



Can be used for small incisions, such as resection of the thyroid gland, Head-Neck Dissection

Screw Terminal

Catalog #	Size
RT-1174-00	Standard





Frame Clamp



Catalog #	Size
RT-1176-00	Standard

Standard Instruments Clamp



Catalog #	Size
RT-1178-00	Standard

Isolated Optic/Endoscope Clamp



Catalog #	Size
RT-1180-00	Standard

Blade Holder With Ratchet Tip



Catalog #	Size
RT-1182-00	Standard

Liver Retractor Hook



Catalog #	Size, Profile
RT-1185-01	Ø 5 mm, Small
RT-1185-02	Ø 5 mm, Medium
RT-1185-03	Ø 5 mm, Large



COPYRIGHT NOTICE

The copyright, trademarks, domain names and other intellectual property rights in all materials and information in this presentation belongs to Surtex Instruments Ltd. All rights are reserved. Technical alterations are possible. This presentation may be used for no other purpose than offering, buying and selling of Surtex Instruments products. No part may be reproduced or copied in any form. In the event of misuse we retain the right to recall our catalogues and take appropriate legal action.

DISCLAIMER

This documents provides general information about Surtex Instruments Ltd, its products and services, and summarises general capabilities and offerings, which we deem to be relevant to our customers. Whilst Surtex Instruments has taken appropriate steps to ensure the accuracy of the information contained in the document Surtex Instruments gives no warranty regarding the accuracy or completeness of such information.

The presentation was prepared to provide information and does not constitute a contract. Surtex reserves the right, without prior notice, to change, delete, supplement, or otherwise amend at any time the information, images and offerings contained in the presentation or other documents. Surtex shall not be liable for any loss or damage of whatever nature (whether direct, indirect, consequential or other) may arise as a result of any third party relying on the information contained in this document.

For further detailed information, prices, terms and conditions, customer should contact Surtex Instruments at sales@surtex-instruments.co.uk.

© 2020 SURTEX INSTRUMENTS. ALL RIGHTS RESERVED. PRINTED IN UNITED KINGDOM. BT1-01 Rev 1.0



Unit 202 Kingspark Business Centre
152-178 Kingston Road, New Malden
Surrey KT3 3ST United Kingdom
Phone: +44 (0) 208 123 3513

E-mail: sales@surtex-instruments.co.uk
Website: www.surtex-instruments.co.uk



A member of the ABHI



Association of
British HealthTech
Industries

Health Tech **For Life**